

# Kidde Fire Protection

## NATURA™ (400 Series) Inert Gas System

### Component Description

### Selector Valves

#### FEATURES

- For Approvals, see the “COMPATIBILITY” table.
- REACH and RoHS compliant

#### DESCRIPTION

The selector valves route the agent from a central cylinder bank to the relevant area being protected. All Kidde Fire Protection NATURA™ (400 Series) Inert Gas System selector valves are 2-way ball valves with full bore. The selector valve actuator operates pneumatically from manifold pressure routed through a pressure regulator on the backplate manifold and the respective backplate solenoid valve. Selector valve comes with a handle supplied for manual resetting after operation.

They are also supplied with Limit switches for monitoring the position of the valve (Open/Closed).

Selector valves have BSPP threaded inlet and outlet ports for connection to the distribution piping for sizes 1/2” to 2”. For 3” and 4” selector valves, uses DIN 2638 flanges to connect to the system piping.



#### SPECIFICATIONS

Working Pressure (Nominal):

- Valve: 140 Bar (2030 Psi)
- Actuator: 8 Bar (116 Psi)

Temp Range(s):

- ISO/EN: -20° to 50°C (-4° to 122°F)
- FM Approved / UL Listed: -20° to 54°C (-4° to 130°F)\*

\*Unless superseded by local/national standards

Limit Switch:

- Switch:NO or NC
- Voltage (Max): AC-15: 240 V / 4 A  
DC-13: 24 V / 1 A
- Insulation (Ui):500 V

#### COMPATIBILITY

Series	DIOM P/N	Approvals*
Natura IGS system	06-237518-001	LPCB, FM, UL
* For additional listings, contact Kidde Fire Protection		

#### ORDERING INFORMATION

Part Number	Description	Weight
22-37140-025	Selector valve, DN 25, 8-10 Bar Actuator	5.2 kg (11.5 lbs)
22-37140-040	Selector valve, DN 40, 8-10 Bar Actuator	9.2 kg (20.3 lbs)
22-37140-050	Selector valve, DN 50, 8-10 Bar Actuator	12.7 kg (28 lbs)
22-37140-080	Selector valve, Flange DN 80, 8-10 Bar Actuator	52.6 kg (116 lbs)
22-37140-100	Selector valve, Flange DN 100, 8-10 Bar Actuator	82 kg (180.8 lbs)

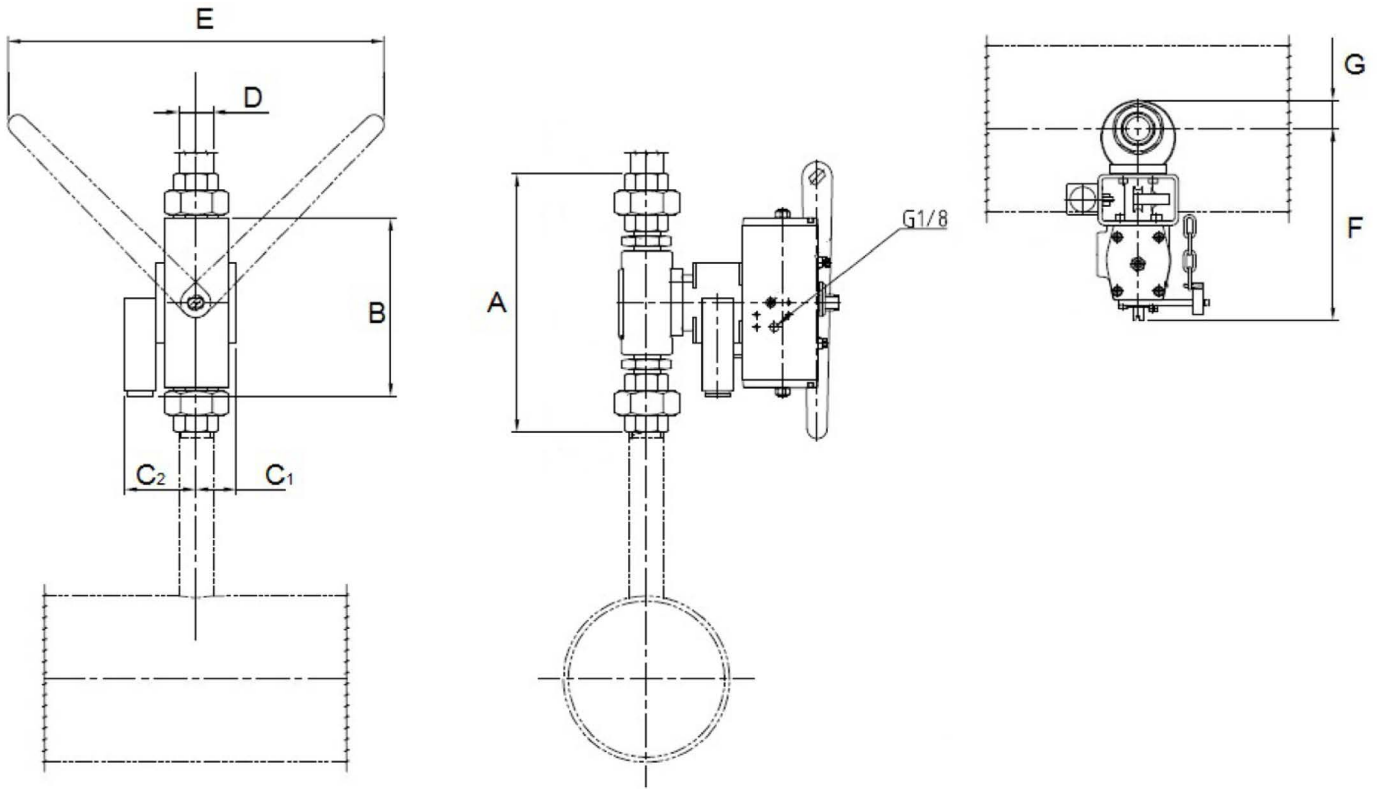


Figure 1. DN 25, 40, and 50 Selector Valves

Table 1: DN 24, 40, and 50 Selector Valve Dimensions (in millimeters)

Part Number	D	A	B	C <sub>1</sub>	C <sub>2</sub>	E	F	G
22-37140-025	1" BSPP	257	177	40	71	374	190	29
22-37140-040	1-1/2" BSPP	293	286	47	71	366	242	42
22-37140-050	2" BSPP	334	243	52	71	366	250	52

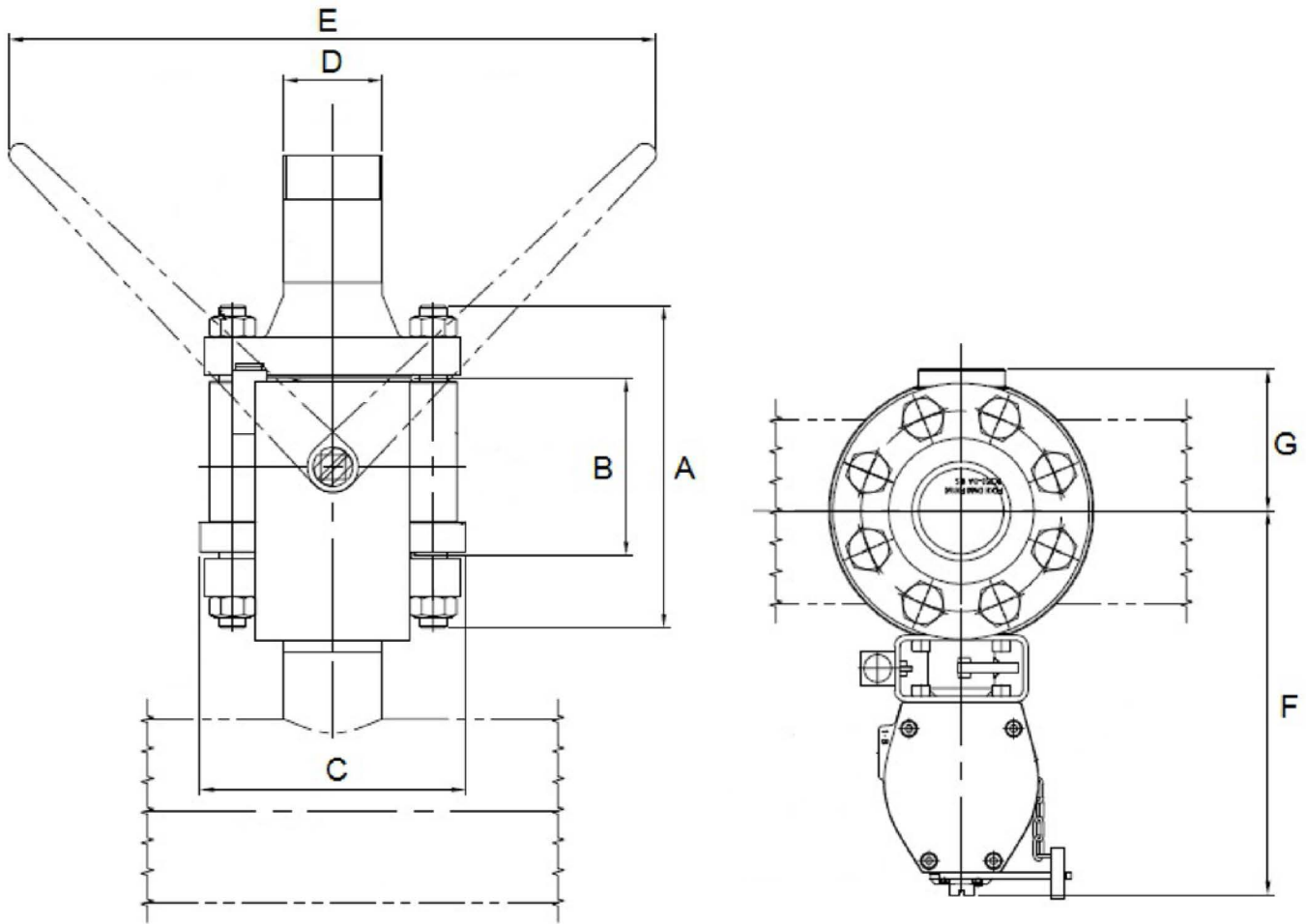


Figure 2. DN 80 and 100 Selector Valves

Table 2: DN 80 and 100 Selector Valve Dimensions (in millimeters)

Part Number	D	A	B	C	E	F	G
22-37140-080	3"	290	160	238	581	345	128
22-37140-100	4"	330	190	277	581	385	152

**EXPORT INFORMATION (USA)**

Jurisdiction: EAR

Classification: EAR99

This document contains technical data subject to the EAR.

This literature is provided for informational purposes only. Kidde-Fenwal, LLC believes this data to be accurate, but it is published and presented without any guarantee or warranty whatsoever. Kidde-Fenwal, LLC assumes no responsibility for the product's suitability for a particular application. The product must be properly applied to work correctly. If you need more information on this product, or if you have a particular problem or question, contact KIDDE-FENWAL, LLC, Ashland, MA 01721.

Kidde-Fenwal, LLC  
400 Main Street  
Ashland, MA 01721, USA

KFI U.K. Limited  
Station Road,  
Bentham, Lancaster, LA2 7NA, UK

Kidde Technologies  
Survey No. 28/2, 44/2 and 45  
Rasyani, Dandapta Road  
Raigad Maharashtra-410207, India

[kiddefenwal.com](http://kiddefenwal.com) | 508.881.2000



Kidde Fire Systems, Kidde Fire Protection and Fenwal Controls branded products are created exclusively by Kidde-Fenwal, LLC.

Unistrut is a registered trademark of Atkore International Group. Argonite is a registered trademark of Kidde-Fenwal, LLC.

All other trademarks are the property of their respective owners.

2026© Kidde-Fenwal, LLC | All Rights Reserved

P/N: KDS 22-37140-XXX, KP-38-2400 Rev. AE