

For CONVENTIONAL and ADDRESSABLE CONTROL UNITS,  
including the new AEGIS™-PHX

Effective: July 2025  
K-76-1200 Rev AD

## FEATURES

- Increase awareness of system status
- Service/inspection reports hosted in your account
- Multiple sites under one account
- Log events of all tested devices
- Diagnose alarm systems in remote locations before work (which means fewer visits)
- Suspect which devices may malfunction based on live monitoring
- Easily accessible configuration files
- Seamless integration with our Kidde Fire Systems conventional AEGIS™-PHX, AEGIS™ 2.0 control units and current & legacy addressable control units
- Digital record of all the events that get reported via the cellular gateway in support of any insurance claim
- Add IntelliSite™ offerings as part of maintenance and service contracts

Reach out to the Kidde Fire Systems sales team to learn more about IntelliSite, as we are continuously working on new features to support your business.

## DESCRIPTION

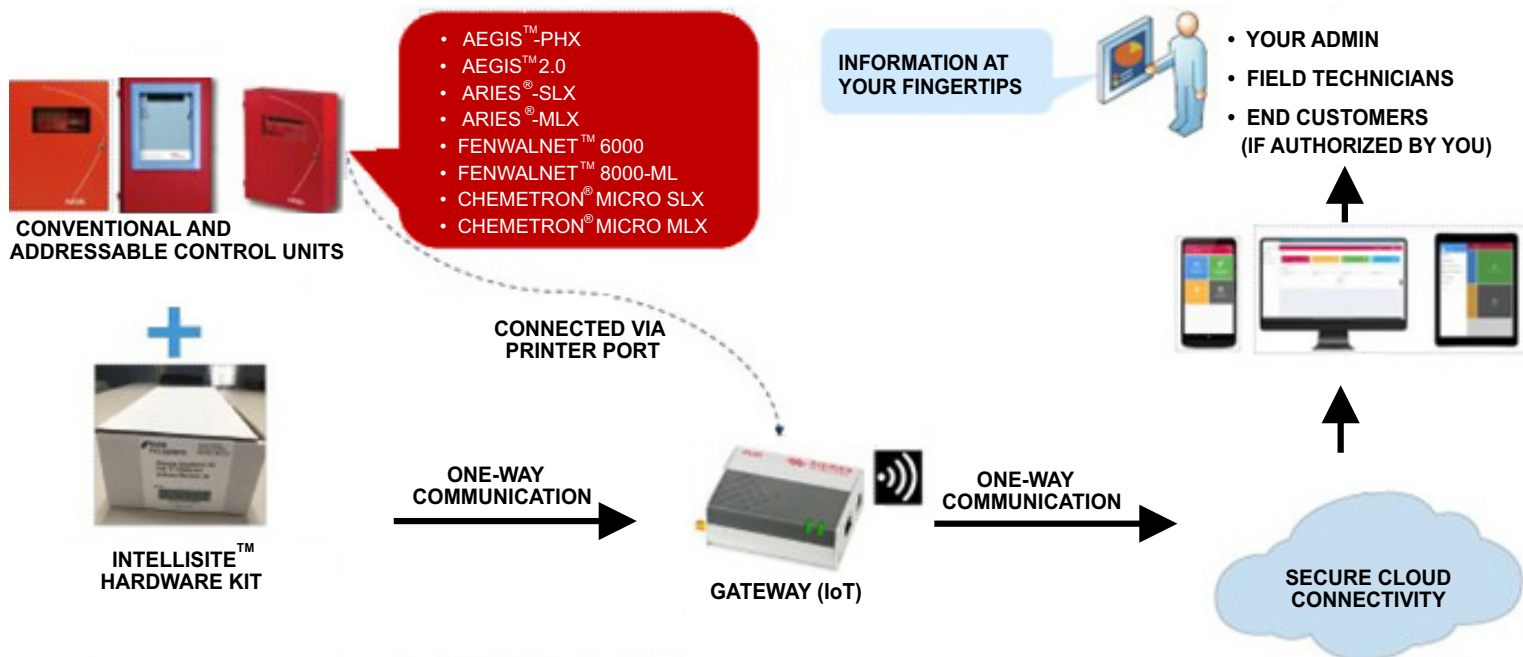
IntelliSite™ provides users timely information about their Kidde Fire Systems or legacy Fenwal® or Chemetron® addressable control units and the AEGIS™ 2.0 and AEGIS™-PHX conventional control units (with firmware version 3.0.x or later). Users are remotely notified of the state of their panels with firsthand information necessary to improve servicing (free account setup required).

## CONFIGURATION

A 4G cellular gateway connects to the control unit via the panel's RS232 port. The control unit is configured to send events to the gateway through the port. Events are forwarded to the IntelliSite™ web portal and enabled cellular devices in real time.

## MOBILE APPLICATIONS

IntelliSite mobile applications can be downloaded directly from the Google Play™ store or App Store®. The same login credentials are used on the mobile application and web portal.



## WEB PORTAL

The IntelliSite web portal is the central point for system events and information management. The intuitive uncluttered dashboard provides an overview of the state of systems at first glance.

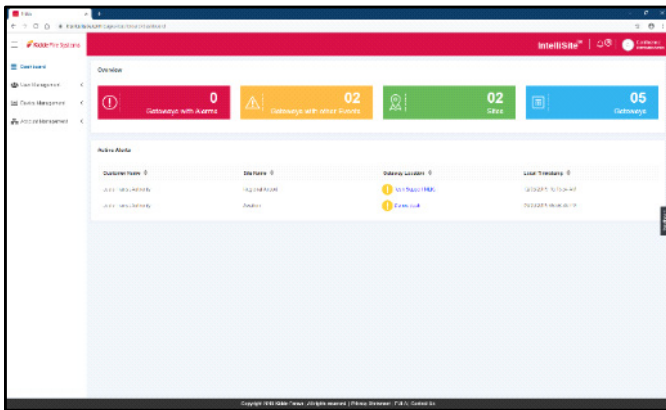
## EVENT PRIORITY

Alarms have higher priority than other events. For a system with an Alarm event, the dashboard prioritizes and reports the system in Alarm state. Subsequent events for a system in Alarm are captured while the primary state of the system remains in Alarm until Normal.

## E-MAIL AND APP NOTIFICATIONS

IntelliSite sends out an e-mail notification to your e-mail on record when an event is received. If you are logged into the mobile application, IntelliSite will also send you a notification on your cellular device.

## DASHBOARD



## MINIMUM PHONE, DEVICE AND BROWSER REQUIREMENTS

Use the IntelliSite application on a compatible phone or mobile device to gain valuable system insights with real-time event information and more. Please note that the IntelliSite application can be accessed either on smart phone or website (or both).

- Android™ 6 or later
- iOS™ 11 or later
- Google Chrome™ 67 or later

### EXPORT INFORMATION (USA)

Jurisdiction: EAR

Classification: EAR99

This document contains technical data subject to the EAR.

This literature is provided for informational purposes only. Kidde-Fenwal, LLC believes this data to be accurate, but it is published and presented without any guarantee or warranty whatsoever. Kidde-Fenwal, LLC assumes no responsibility for the product's suitability for a particular application. The product must be properly applied to work correctly. If you need more information on this product, or if you have a particular problem or question, contact KIDDE-FENWAL, LLC, Ashland, MA 01721.

**kiddefiresystems.com**  
**508.881.2000**

Kidde Fire Systems, Kidde Fire Protection and Fenwal Controls branded products are created exclusively by Kidde-Fenwal, LLC. All trademarks are the property of their respective owners. All products are the property of their respective owners.

 **KiddeFenwal**

400 Main Street, Ashland, MA 01721  
P/N: **K-76-1200** Rev. AD | kiddefenwal.com | 508-881-2000  
2025© Kidde-Fenwal, LLC | All Rights Reserved

## ORDERING INFORMATION

77-100000-002	IntelliSite™ Remote Monitoring System: Contents include the following: <ul style="list-style-type: none"><li>• Cellular Gateway (4G)</li><li>• Antenna with Cables and Mounting Disk</li><li>• Power Supply</li><li>• SIM Card (4G)</li><li>• Serial Communications Cable</li></ul>
06-119000-001	Replacement Antenna with Cables and Mounting Disk
06-119001-001	Replacement Power Supply
06-119003-001	Replacement Serial Comm. Cable

## FACILITY REQUIREMENTS

- Secure location for gateway, within 16 ft. (5 m) of control unit
- Either 120 VAC power (recommended), a suitable DC power source of between 6.0 VDC and 30.0 VDC or 24 VDC power provided from the control unit Auxiliary Power outputs

**(Note: Auxiliary Power outputs cannot be used to power the IntelliSite Gateway from the AEGIS 2.0 control unit at this time.)**

- Available RS232 port on the control unit, with no printer attached
- Cellular phone reception at facility
- Battery or other backup system for loss of power (include 75 mA current draw of the gateway in backup battery calculations)

## CAUTION

**IntelliSite™ is a convenient tool intended to assist in the servicing of Kidde Fire Systems intelligent and conventional control units. It is intended as an ancillary type system and requires a continuous, uninterrupted Internet connection via cellular network. IntelliSite is not intended for use as a primary means of notification of a fire and does not provide property or life safety protection. Therefore, IntelliSite is not approved for and cannot be used as the primary notification means for emergency response personnel or for activation of notification appliance devices or emergency control functions. IntelliSite is not a substitute for a Central Monitoring Station, nor can it be used as a means to communicate to a Central Monitoring Station.**